

# What do the Earth Basics we learned about in this Unit have to do with Environmental Science?

---

---

---

---

---

---

---

---

## Life is Good in the LA Hills

	Tujunga <sup>[14]</sup>	La Crescenta-Montrose <sup>[15]</sup>	Glendale <sup>[16]</sup>	La Cañada Flintridge <sup>[17]</sup>	Pasadena <sup>[18]</sup>
Population	26,527	18,507	195,047	20,381	134,941
Household income	\$58,001	\$82,693	\$57,112	\$148,996	\$62,825



Real Estate	La Canada	Flintridge
Total Listings:		97
Average Price:		\$1,530,981
Highest Listing Price:		\$7,900,000
Lowest Listing Price:		\$1,450

---

---

---

---

---

---

---

---

## What formed the San Gabriel Mountains?




---

---

---

---

---

---

---

---

**Steep Chaparral Slopes in the San Gabriel Mountains**



Chaparral is characterized as being very hot and dry.  
Fires and droughts are very common.  
Plants and animals are adapted to these conditions.

---

---

---

---

---

---

---

---

**Station Fire  
8/26 to 10/16 2009  
Caused by Arson  
Burned 250 square miles**



---

---

---

---

---

---

---

---

**Post Fire Landscape**



---

---

---

---

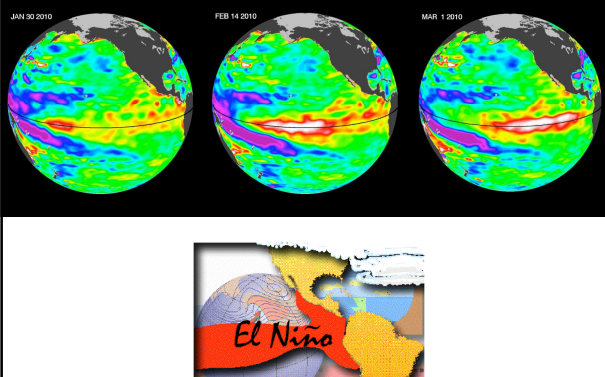
---

---

---

---

### Wet Weather Caused by...?



---

---

---

---

---

---

---

---

### Debris Flow/Mudslide



---

---

---

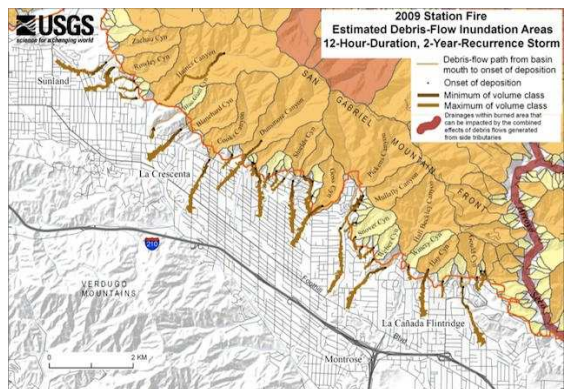
---

---

---

---

---



---

---

---

---

---

---

---

---



---

---

---

---

---

---

---

---



---

---

---

---

---

---

---

---



---

---

---

---

---

---

---

---



---

---

---

---

---

---

---

---

**Brainstorm  
Some  
Possible  
Solutions**

---

---

---

---

---

---

---

---

**Catch Basins/Check Dam**



---

---

---

---

---

---

---

---

## Catch Basins/Check Dam



---

---

---

---

---

---

---

---

## Catch Basins/Check Dam



---

---

---

---

---

---

---

---

## What Now?



---

---

---

---

---

---

---

---